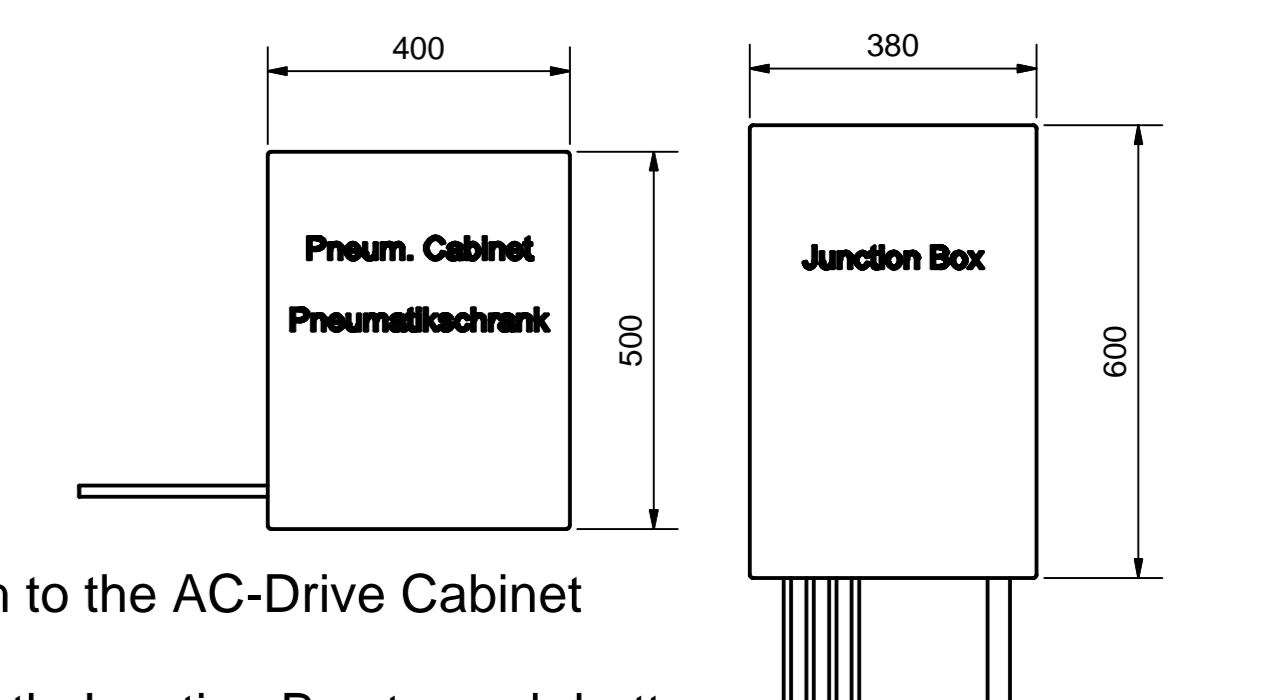
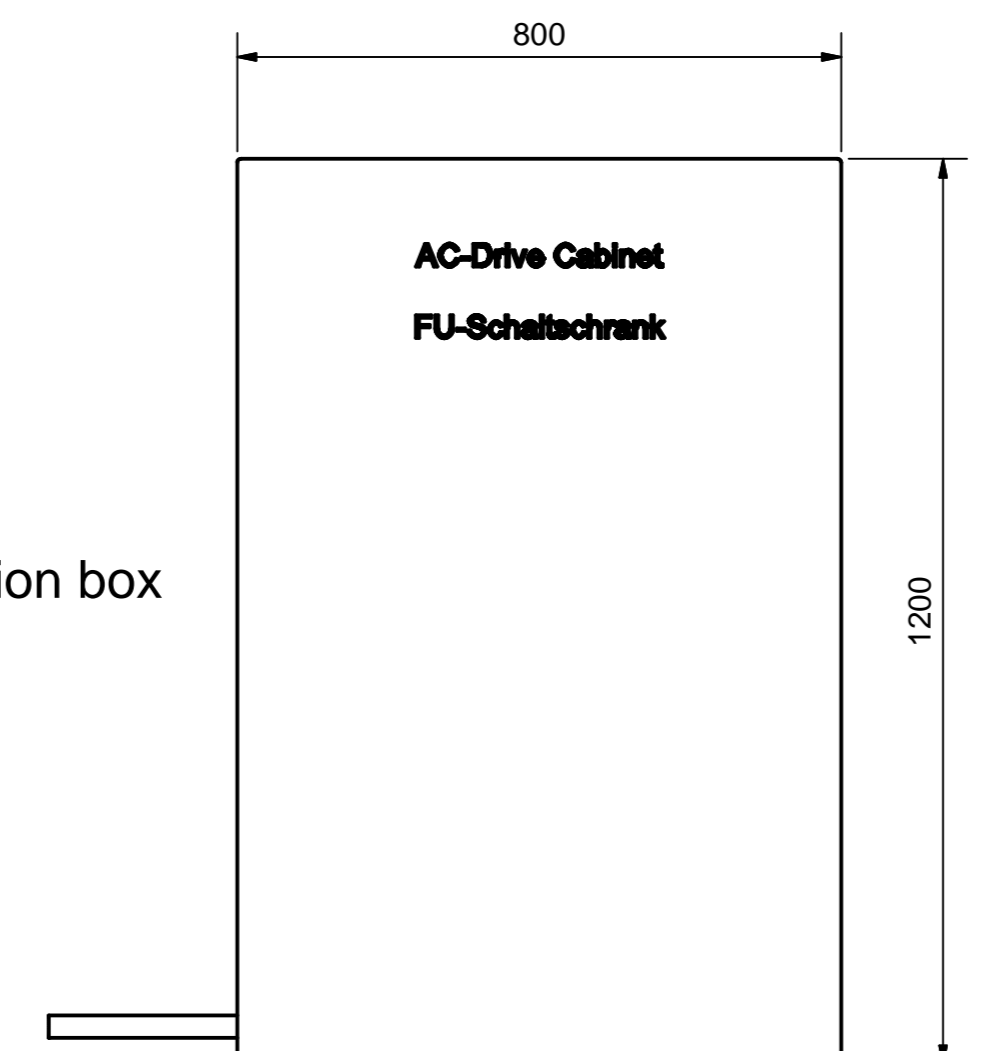


Power supply by customer:
440V; 60 Hz

35m cable length to the junction box
and to the pneumatic cabinet



35m cable length to the AC-Drive Cabinet
7,35m cable length Junction Box to each bottom
knife motor
8m tube length from middle of the beam to the
pneumatic cabinet



Application Information:

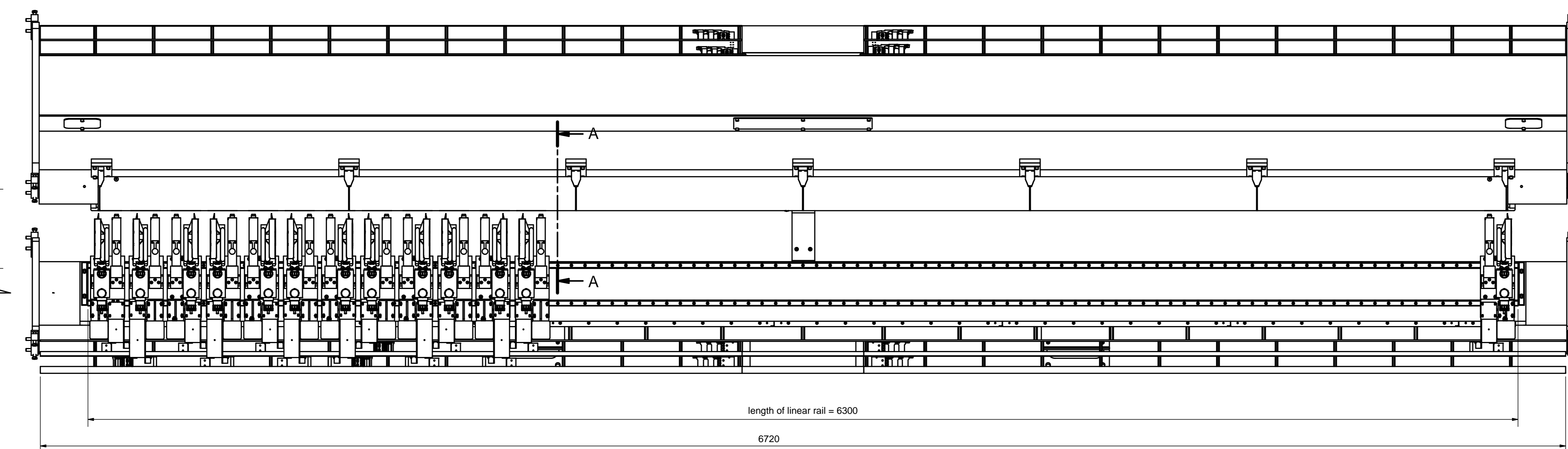
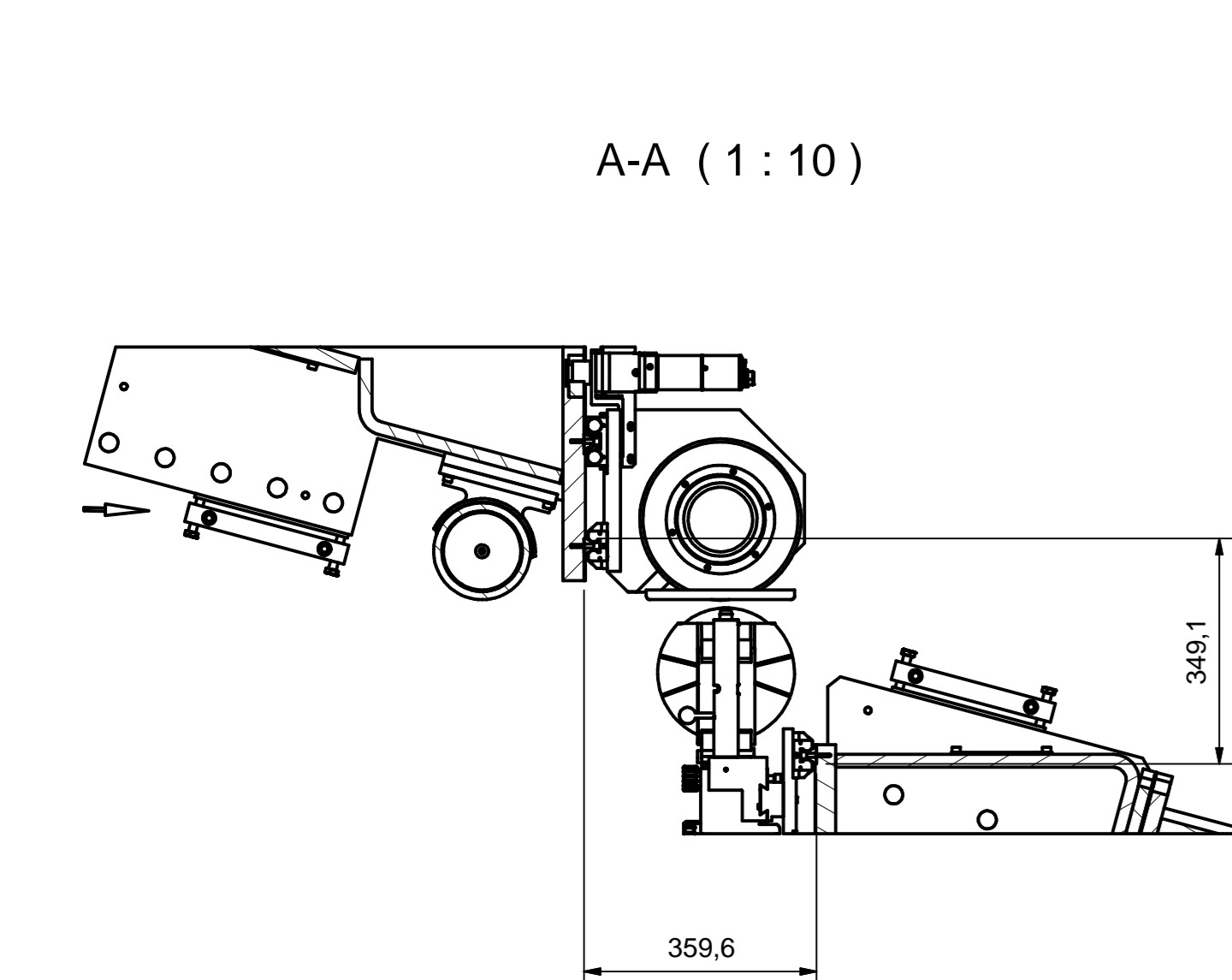
Techn. Data's:
max. web speed: 2300 m/min
min. web speed: 250 m/min
material: printing paper
basis weigth: 35 - 140 g/m²
No. of slits: 13
max. overall slit width: 6050 mm
min. slit width: 245 mm (every second slit 95mm)
min. raw web width: 6050 mm
inside frame width: 6800 mm

colour to be painted: RAL6017 (may green / vert mai)

knifeholder: Serie "C" class 3
knife diameter: 200 mm
knife material: X 155CrVMo12 1 (1.2379)

anvil motor:
MK 106-4DK.05.N (M194107)
3 Phasen; 230 V D / 400 V Y; 105 Hz; 0.38 kW; 2990 1/min
1.8 A / 1.05 A; cos phi 0.79; IP54 F
anvil knife diameter: 250 mm
anvil knife material: X 155CrVMo12 1 (1.2379)

Air pressure:
min. 5.5 bar constant air supply for the carriage brakes,
6 bar adjustable air supply for the knifeholder over
air regulator with oil- and waterseparator and 5µm filter
(included)



Zur Abweichung nach DIN ISO 2768 T1 - m- DIN ISO 2768 T2 - K- Oberflächen nach DIN ISO 1302		 FIFE-TIDLAND GmbH		Bestimmung: MSP CIII - full automatic with servomotor and gear rack web in, mech. Link Pin L= 6800 (inside frame)	
Werkstoff	0	Druck	AD	1:10	mm
Gewicht	7560 kg	Stückzahl	1	0	692892
CD-System	Inventor R10	Rev.	25.10.2006	1	003
Schuldschein nach DIN 34	Prüfung mark according to DIN 34	Achtung: Keine ist nicht metallecht		Attention: Copy is not to scale	